



Live Blood Analysis

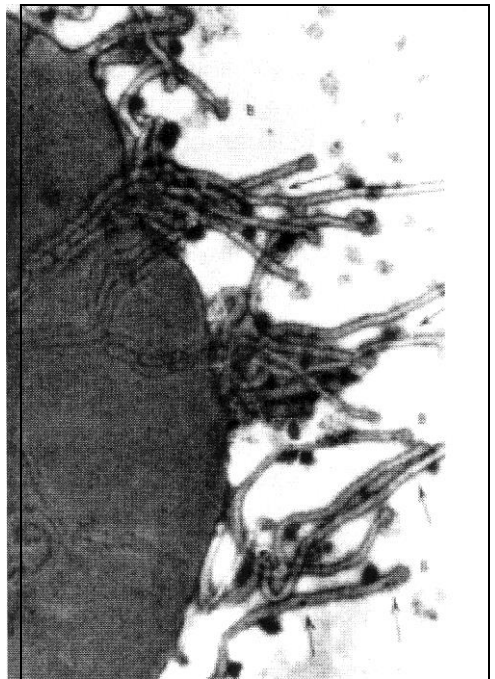
Improving Your Health and Energy Through Biology and Vibrational Homeopathic Medicine

Good health is attainable when the environment for it is created. The Prophet Edgar Cayce of Virginia Beach, predicted in the 1930's that in the future a person's state of health would be determined by the evaluation of one drop of blood. That time has arrived.

Live Blood Analysis in Dark Field, monitors the Life Cycle of an ever present protein the Gunther Enderlein called the Symprotit. The Symprotit creates good health under the right pH conditions or disease under the wrong pH conditions.

Within us are the seeds for life and or death depending on the environment we create for the Symprotit. Diet, radiations, emotions and chemicals are the four factors which influence this internal body environment for life or for death. Much like how the butterfly starts out as an egg, then becomes a caterpillar, and then a butterfly, so too can the microscopic Symprotit evolve into a prebacteria in the blood and then a other bacteria or fungus in the tissues. Monitoring the life cycle of this Symprotit can give you the correct understanding of biology to rid your body of todays long list of chronic ailments like cancer, arthritis, candidia, Chronic Fatigue Syndrome, prostate enlargement and infections, Multiple Sclerosis, bacterial, viral and yeast infections, depression, sleep disorders, arthritis, headaches, constipation, excess body fat, potency or fertility problems, memory problems and more.

Stephen Heuer began his search for higher health in 1976 when at the age of 16 he began to experience his own health challenges. Leaving no stone unturned in an effort to heal himself, Stephen has discovered a treasure trove of health secrets that have steadily liberated him and his clients from the frustrating grip of ill health. Stephen earned his B.S. degree from the American College of Nutripathy in Scottsdale, Arizona in 1990. He has been in private practice since 1989. Using German isopathic, homeopathic remedies, vibrational medicine, air ionizers and a host of some of the most fantastic healing technologies of our day, Stephen offers a



Electron scanning micrograph of the so-called "plasmalytic forms" or chondrits as they emerge from the erythrocyte. It is very evident in this picture that the chondrits penetrate the membrane and are not just on or in the erythrocyte. This process is then quickened when the sample is heated or aged. These are observed in dark field as either white or yellow strands.

Synergistic Nutrition
A Private Association Membership
213 Riverside Court Suite B, Greer, South Carolina 29650
1(888)988-3325 or visit sgn80.com

powerful holistic program to restore your health. With this multifaceted approach his clients experience substantial to complete improvement.

You will learn that the many nutritional teachings of our day are incorrect. Many are taught as a religion as opposed to using what really works. You will learn that most supplements sold on the market today are depleteing you of cofactor substances and any beneficial effect you may be experiencing is a drug like response and of a temporary nature. You will learn how true health is created and maintained. This will end up saving you a lot of time and money as you will no longer be experimenting with products that do not address what you really need. You will also not need to continue taking the majority of the supplements you have been using.

Live Blood Analysis in Dark Field is an evaluation of your current state of health. Within 30 minutes you will observe on the T.V. monitor your live blood cells current condition and environment. This observation enables us to see oxygen carrying capacity, immune system status, liver/digestive function, free radical stress, pH imbalances, mineral deficiencies, heavy metal toxicity, adrenal stress, bowel toxicity and inflammation and more.

Stephen Heuer offers powerful holistic programs to restore your health. He uses a multifaceted approach, that enables his clients to experience substantial to complete improvement. Sessions with Stephen are approximately one and one half, to two hours long. Dark Field Analysis are viewed on a TV monitor and are recorded.

Stephen Heuer BS Nutripathy

Synergistic Nutrition
A Private Association Membership
213 Riverside Court Suite B, Greer, South Carolina 29650
1(888)988-3325 or visit sgn80.com